



BLAIRGOWRIE YACHT SQUADRON

# 47<sup>th</sup> Victorian Sabre State Championships



**SAILING INSTRUCTIONS**

**19<sup>th</sup>- 20<sup>th</sup> February 2022**

**Organising Authority:**  
Blairgowrie Yacht Squadron

**In conjunction with the:**  
Sabre Sailing Association of Victoria Inc

The notation '[DP]' in a rule in the NOR and SI's means that the penalty for a breach of that rule may, at the discretion of the protest committee, be less than disqualification. This changes RRS 64.1.

The notation '[SP]' denotes a rule for which a standard penalty will be applied by the race committee without a hearing. This changes RRS 63.1, Appendix A4 and Appendix A5.

The notation '[NP]' denotes that a breach of this rule will not be grounds for protest by a boat. This changes RRS 62.1(a).

## **1 RULES**

1.1 The regatta will be governed by the rules as defined in *The Racing Rules of Sailing 2021-2024* ('RRS').

1.2 The *Australian Sailing Special Regulations Part 2 For Off the Beach Boats*, shall apply.

1.3 RRS Appendix T, Arbitration shall apply.

1.4 The post-race penalty is modified as stated in clause SI 16.9.

1.5 The Sabre Class Rules of Measurement will apply.

1.6 [NP] A boat may receive outside help where the Race Committee deems that the vessel and its crew requires assistance in order to right a capsized vessel and continue racing. This changes Rule 41, RRS.

## **2 NOTICE TO COMPETITORS**

2.1 Notices to competitors will be posted on the official Sabre notice board which will be located on the ground level of the club in the Junior Lounge.

## **3. CHANGES TO SAILING INSTRUCTIONS**

3.1 Any change to the Sailing Instructions will be posted not less than two hours before the programmed start of racing on the day it will take effect, except that any change to the schedule of races will be posted by 1900hrs on the day before the changes will take effect.

#### 4. SIGNALS MADE ASHORE

4.1. Signals made ashore will be displayed using the eastern halyards on the club's flagpole located in front of the clubhouse.

4.2. When flag "AP" is displayed ashore '1 minute' is replaced with 'not less than 30 minutes' in Race Signals AP.

#### 5. SCHEDULE

5.1 The proposed schedule is:

Date	Event	Time
Saturday 19 <sup>th</sup> Feb 2022	Registration	0830 – 0945 hrs
	Competitors Briefing	0945 hrs
	Race Session #1	Warning 1130 hrs
Sunday 20 <sup>th</sup> Feb 2022	Race Session #2	Warning 1030 hrs
	Presentation	After racing (unless re-sail required)
Saturday 26 <sup>th</sup> Feb 2022	Provision for re-sail	1030 hrs

5.2 The first signal (warning signal) for the first race will be at 1130hrs on the first scheduled day of racing. No warning signal will be made after 1600 hrs on Sunday 20<sup>th</sup> February 2022. If a re-sail is deemed necessary, no warning signal will be made after 1600hrs on Saturday 26<sup>th</sup> February 2022.

5.3 The series will comprise a maximum of five races.

5.4 The provision for a re-sail will only be invoked if 3 races have not been completed on the weekend of 19<sup>th</sup> and 20<sup>th</sup> February 2022.

#### 6. CLASS FLAGS

6.1 Class flag will be the Sabre Class Flag.

## **7 RACING AREA**

7.1 The racing area shall be on Port Phillip in the vicinity of the Blairgowrie Yacht Squadron (Attachment A).

## **8 THE COURSES**

8.1 The courses to be sailed will be triangular (60/60/60) (Attachment B), which includes the order in which marks are to be passed and the side on which each mark is to be left.

8.2 No later than the warning signal, the race committee will designate the course by displaying a numeral pennant.

## **9 MARKS**

9.1 Mark 1 will be an orange inflatable conical buoy.

9.2 Mark 2 will be an orange inflatable conical buoy.

9.3 Mark 3 will be an orange inflatable conical buoy.

9.4 A new mark as provided for in SI 12.1 will be a yellow inflatable conical buoy with a black band.

## **10 AREAS THAT ARE OBSTRUCTIONS**

10.1 There are no areas that are obstructions.

## **11 THE START**

11.1 Races will be started using a 3 minute starting sequence. This changes RRS 26.

11.2 The starting line will be between a staff displaying an orange flag on the Race Committee boat at the starboard end of the start line and a staff displaying an orange flag on a pin boat at the port end of the start line.

11.3 To alert boats that a race or sequence of races will begin soon, the orange starting line flag will be displayed with one sound at least five minutes before a warning signal is made.

11.4 A boat starting later than five (5) minutes after her starting signal will be scored Did Not Start without a hearing. This changes RRS A5 and 63.1.

## **12 CHANGE TO NEXT LEG OF COURSE**

12.1 To change the next leg of the course, the Race Committee will lay a new mark and remove the original mark as soon as practicable. When in a subsequent change, a new mark is replaced, it will be replaced by an original mark.

## **13 THE FINISH**

13.1 The finishing line will be between a staff displaying a blue flag on the Race Committee boat at the starboard end, and a staff displaying a blue flag on a pin finish boat set to the starboard side of the Race Committee boat at the port end.

13.2 The closure of the finish window of 15 mins will be indicated by lowering of the blue flag on the Race Committee boat accompanied by one sound signal.

## **14 PENALTY SYSTEM**

14.1 RRS 44.1 is changed so that the Two-Turns penalty is replaced by the One-Turn Penalty.

## **15 TIME LIMITS**

15.1 Each race will have an expected target time of 50 minutes.

15.2 The time to the 1<sup>st</sup> mark will be 30 mins. Failure to round the 1<sup>st</sup> mark within the time frame will result in abandonment of the race.

15.3 The time limit for the first boat to sail the course and finish is 90 minutes.

15.4 Boats failing to finish within 15 minutes after the first boat sails the course and finishes will be scored DNF.

## **16 PROTESTS AND REQUESTS FOR REDRESS**

16.1 Protest forms are available at the Regatta Office. Protests and requests for redress or reopening must be delivered to the Regatta Office within the required time limit.

16.2 The protest time limit is 1 hour after the last boat has finished the last race of the day or the Race Committee signals 'no more racing today'.

16.3 Notices of protests by the Race Committee will be posted to inform boats under Rule 61.1(b).

16.4 Notices will be posted no later than 30 minutes after the protest time limit to inform

competitors of hearings in which they are parties or named as witnesses.

16.5 On the last scheduled day of racing a request for reopening a hearing must be delivered within the protest time limit if the requesting party was informed of the decision on the previous day; or no later than 30 minutes after the requesting party was informed of the decision on the last scheduled day. This changes Rule 66.

16.6 On the last scheduled day of racing a request for redress based on a protest committee decision must be delivered no later than 30 minutes after the decision was posted.

16.7 Hearings will be held in the Protest Room near the Regatta Office on the upper floor of the BYS club house.

16.8 A competitor may not protest on a question of measurement or equipment control later than the normal protest time applying to Race 1 except on the grounds that there has been a subsequent alteration to the boat or its equipment.

16.9 Appendix T shall apply with the Post Race Penalty (T1b) being amended as follows: A Post Race Penalty is 20% of the difference between a boat's finishing place and the score for a DNF rounded up to the nearest whole number. The scores for other boats shall not be changed. The penalty shall not cause a boat to be scored worse than DNF.

## **17 SCORING**

17.1 Five races are scheduled of which 3 are required to be completed to constitute a series.

17.2 When fewer than 4 races have been completed, a boat's series score will be the total of her race scores.

17.3 When 4 or more races have been completed, a boat's series score will be the total of her race scores excluding her worst score.

17.4 Scoring for determination of results in divisions will be established by aggregating the results based on the results of the overall fleet

## **18 SAFETY REGULATIONS**

18.1 [SP] Before leaving to race on each scheduled racing day, the sailor shall sign on using a manual system which will be set up in the Junior Lounge next to the official Sabre notice board.

18.2 [SP] As soon as possible after returning ashore, but no later than the Protest Time Limit, the sailor shall sign off using the same manual system which will be set up in the Junior Lounge next to the official Sabre notice board.

18.3 Boats failing to sign on or off will be penalised two points in the race closest to the breach of this SI.

18.4 Any competitor retiring from a race must notify the Race Committee as soon as possible and sign off immediately on returning to shore.

18.5 No races shall be started or continued if the average wind (measured over the previous 15 minutes) is less than 5 knots nor more than 22 knots.

## **19 [DP] ELECTRONIC COMMUNICATIONS**

19.1 Except in an emergency, a boat shall neither make nor receive electronic or data communications while racing which are not available to all boats.

19.2 Screen-less GPS tracker devices are allowed.

## **20 [DP] REPLACEMENT OF COMPETITOR OR EQUIPMENT**

20.1 Substitution of competitors or boats will not be permitted.

20.2 Substitution of damaged or lost equipment will not be allowed unless authorised by the Race Committee. Requests for substitution must be made to the Race Committee at the first reasonable opportunity.

20.3 Batten changes to replace damaged battens are permitted.

## **21 [NP] OFFICIAL BOATS**

21.1 Official Race Management boats will be identified by displaying the BYS burgee.

## **22 [NP] [DP] SUPPORT BOATS**

22.1 All support boats shall be registered with the Organising Authority and will be required to comply with event support boat regulations (Attachment C).

22.2 All support boats shall keep to leeward of the start line and its extensions between the preparatory signal and the start signals and more than 100m clear of any competing boat or mark of the course, between the start signal and the finish of the last boat, except when asked by the Race Committee to assist.

22.3 Non-registered coaches, parents, private and spectator craft must remain more than 150 meters outside the entire course area and not receive the above benefits.

## 23 [DP] RIGGING AND STORAGE

23.1 Boats and trailers shall be kept in their designated areas advised on arrival. Trailers shall not be stored on grass rigging areas.

## 24 PRIZES

24.1 Prizes will be awarded as follows:

Category	Prizes awarded to
Open	1 <sup>st</sup> to 10 <sup>th</sup>
Ladies Champion	1 <sup>st</sup> to 3 <sup>rd</sup>
Youth Champion (Under 18 years)	1 <sup>st</sup> to 3 <sup>rd</sup>
Seniors Champion (18 – 39 years)	1 <sup>st</sup> to 3 <sup>rd</sup>
Masters Champion (40 – 49 years)	1 <sup>st</sup> to 3 <sup>rd</sup>
Grand Masters Champion (50 – 59 years)	1 <sup>st</sup> to 3 <sup>rd</sup>
Veterans Champion (60 – 69 years)	1 <sup>st</sup> to 3 <sup>rd</sup>
Grand Veterans Champion (70+ years)	1 <sup>st</sup> to 3 <sup>rd</sup>
Division 1	1 <sup>st</sup> to 3 <sup>rd</sup>
Division 2	1 <sup>st</sup> to 3 <sup>rd</sup>
Division 3	1 <sup>st</sup> to 3 <sup>rd</sup>
Under 60 kg's	1 <sup>st</sup>
Over 90 kg's	1 <sup>st</sup>
Female – Mid Fleet	1 <sup>st</sup>
Male – Mid Fleet	1 <sup>st</sup>

24.2 Allocation of prizes in all categories remains at the discretion of the Sabre Sailing Association of Victoria Inc and is dependent on the number of entries.

24.3 The championship is an 'open' championship and therefore prizes will be awarded in order of scoring irrespective of a competitor's state of origin.



## 25 DISCLAIMER OF LIABILITY

25.1 Competitors participate in the regatta entirely at their own risk. See RRS 3. The Organising Authority will not accept any [liability from material damage or personal injury](#) or death sustained in conjunction with or prior to, during, or after the regatta.

## 26 MEDIA RIGHTS

26.1 By participating in the event, competitors automatically grant to the Organising Authority, and their sponsors, the right in perpetuity to make, use and show static images or video, from time to time at their discretion.

## 27 [NP] INSURANCE

27.1 Each participating boat shall be insured with valid third-party liability insurance with a minimum cover of AUD \$5,000,000 per incident or the equivalent (recommended AUD \$10,000,000).

27.2 Competitors who enter online or sign the entry form are deemed to have declared they hold such cover.

27.3 Competitors may be required to produce evidence of such insurance and any competitor not holding such cover shall withdraw their entry.

27.4 The mandatory Competitor's Declaration contains a clause acknowledging that the competitor currently has the required insurance. This is incorporated in the booking registration form.

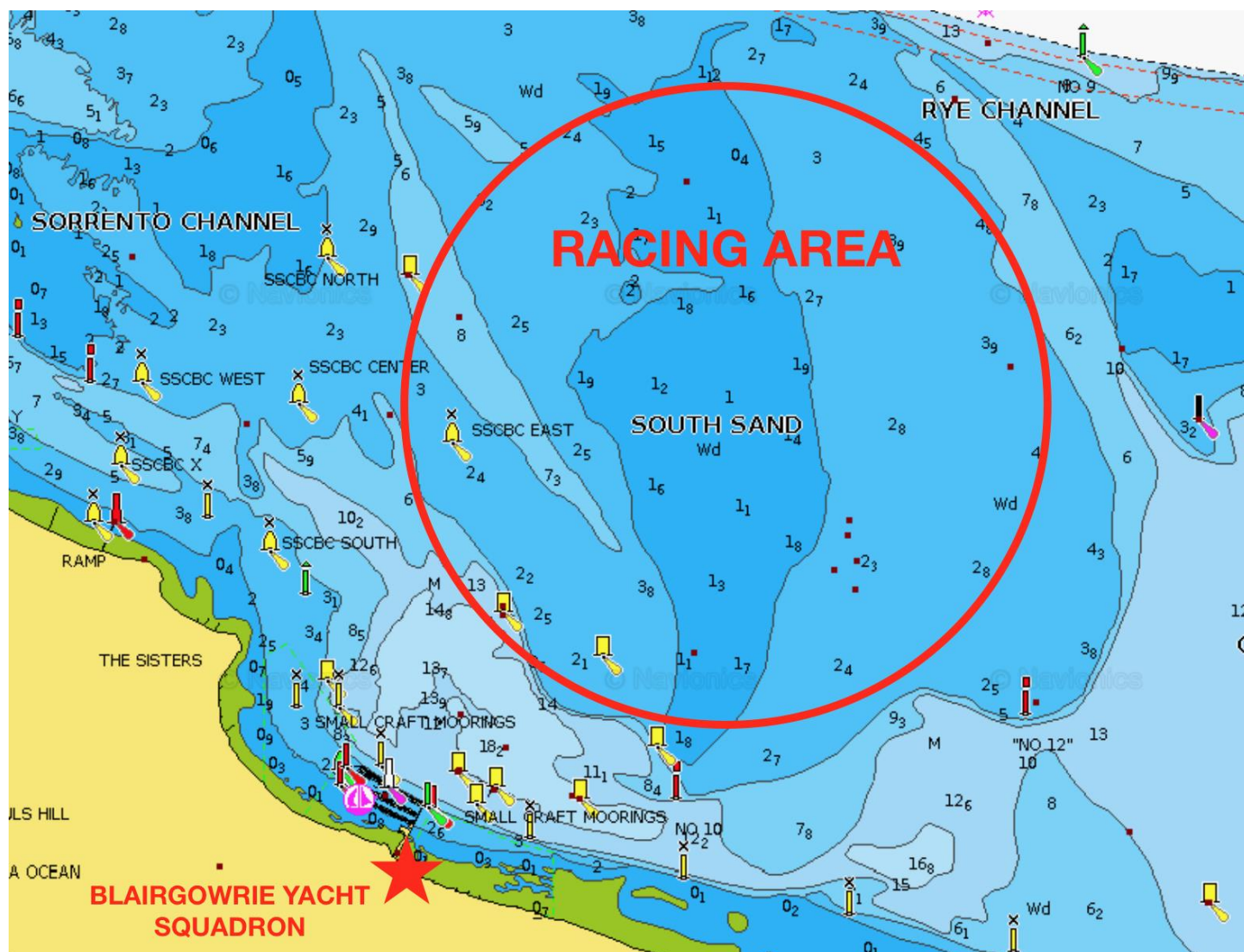
## FURTHER INFORMATION

**Blairgowrie Yacht Squadron: 5925 9600**

Bel Edmondson Sailing Administrator belinda@bys.asn.au	Andrew Little Aust Sailing National Race Officer <a href="mailto:Aflittle.bys@gmail.com">Aflittle.bys@gmail.com</a> 0419361326
Gerard Magner Regatta Manager gkmagner@gmail.com	
Barry Eastgate Secretary/Treasurer SSAV <a href="mailto:Barry.Eastgate@bigpond.com">Barry.Eastgate@bigpond.com</a>	

**ATTACHMENT A**

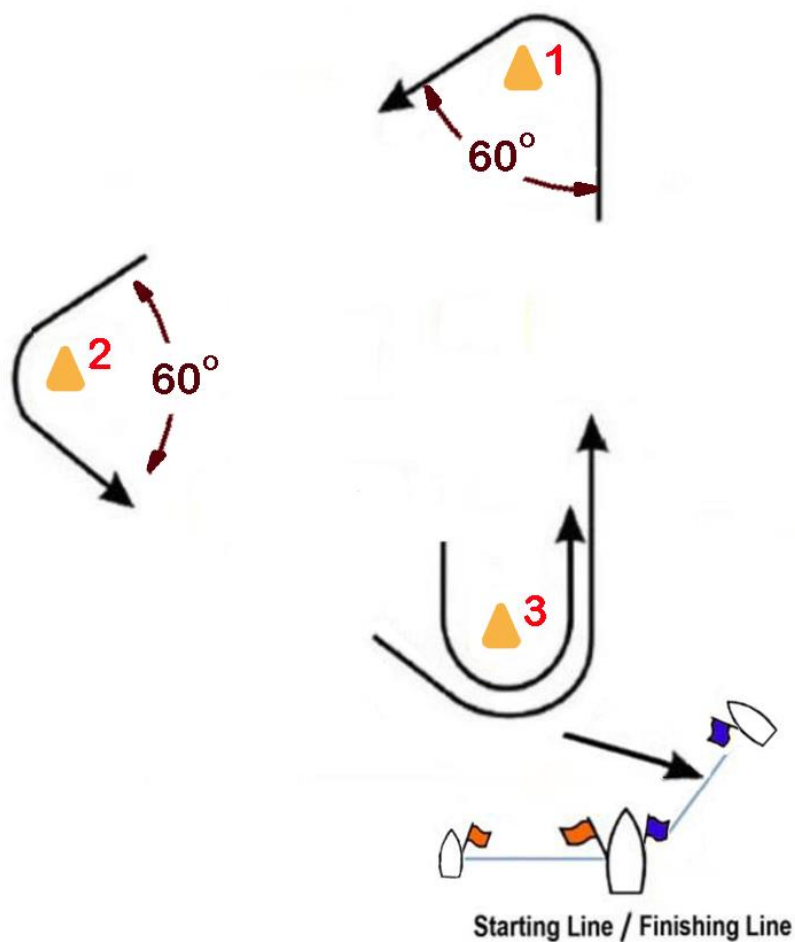
**RACING AREA**



**ATTACHMENT B**

**COURSES:**

COURSE	MARK ROUNDING ORDER
1	START-1-2-3-FINISH
2	START-1-2-3-1-3-FINISH
3	START-1-2-3-1-3-1-2-3-FINISH



All Marks to PORT

## **ATTACHMENT C**

### **SUPPORT BOAT REGULATIONS**

#### **General**

These Support Boat Regulations (SBR) shall apply at all times while the boat is at the venue (BYS). Local marine regulations specify the safety equipment to be carried and conditions under which life jackets (PFD 1) are to be worn.

A copy of the regulations is available at: <https://transportsafety.vic.gov.au/maritime-safety/recreational-vessel-operators/paddle-craft/victorian-recreational-boating-safety-handbook>.

For the purposes of these regulations, a support boat includes any boat that is under the control or direction of a person who is or may provide physical or advisory support to an athlete, including the gathering of data that may be used at a later time.

The Organising Authority may inspect boats at any time to ensure that they comply with these regulations, and the person responsible for the boat shall facilitate such inspection.

An alleged breach of any of these regulations may be referred to the Protest Committee for a hearing. As a result of any hearing, the Protest Committee may instruct the Organising Authority to withdraw accreditation and access rights from the driver or person in charge, with or without the option of substitution, either for a specified period or for the remainder of the competition.

The Organising Authority may change these regulations at any time. Any changes will be posted on the Official Notice Board.

The Organising Authority may, at its discretion, refuse to register support boats not deemed to be suitable. Generally, open boats more than 4.0m and less than 7.5m in length and having minimal or no superstructure (cabin, coach house, bridge, etc) are considered suitable.

Support boats and designated drivers shall be registered at the Regatta Office either before leaving the venue by water for the first time or by 18:00 on the day before the first race of the event that it is supporting, whichever is earlier.

Each boat shall be insured with valid third-party liability insurance with a minimum coverage of AUD\$5,000,000 (or equivalent) per incident.

Only accredited persons may be designated drivers.

The person registering the support boat shall confirm that:

- A valid insurance certificate showing proof of third-party liability coverage as required has been obtained;

- Each designated driver has a motorboat driving license recognised by a national authority appropriate to that boat; and
- Anyone who will be using a radio has an appropriate radio operation license recognised by a national authority.

Support boats shall be provided with a numbered flag by the Organising Authority. Flags must be displayed at all times whilst afloat and returned to the Race Office at the end of the event.

## **Sailing Venue**

Support boats shall use the designated area for launching – these may be a short distance from the venue. Once launched, trailers shall be moved immediately to a designated trailer park or as otherwise directed by the Organising Authority.

Only registered support boats will be allowed into the sailing venue. (Allocated berths or area will be provided at registration).

When not in use, support boats shall be appropriately berthed as directed by the Organising Authority in the allocated areas for support boats for the entire time that these support boat rules apply.

Support boats shall not use the dinghy launching slipways or keelboat pontoons for any purpose whatsoever, including mooring, launching and retrieval, and loading and unloading of equipment.

## **Safety**

Support boats shall carry on board:

- life jackets for all passengers and the driver;
- first-aid kit;
- working VHF radio capable of receiving the allocated race management channels for this event;
- device for making a sound signal;
- compass;
- adequate anchor and tackle for conditions and depth;
- tow rope (minimum 15m long and 10mm thick);
- operational engine kill cord (also known as a safety lanyard or automatic engine immobiliser);
- hand pump or bailer;
- knife; and
- any additional safety equipment required by local maritime law.

It is recommended that life jackets be worn at all times when afloat. All drivers shall wear a kill cord all times when the motor is in operation (refer back to manufacturer's operating manual).

The maximum plated / certified passenger limits for the boat shall never be exceeded.

Team leaders are responsible for overseeing the safe operation of their support boats on the water, including knowledge of who is afloat and ensuring their safe return to the venue.

At all times, the registered driver(s) of a support boat shall comply with directions given by a Race Official. In particular, this includes assisting in rescue operations when requested to do so.

Support boats shall comply with local harbour and marina regulations, including speed limits.

When a race committee displays code flag "V" with repetitive sounds, all official and support boats on the relevant course area shall monitor the relevant Race Committee radio channel for search and rescue instructions.

### **General Restrictions**

The registered driver(s) of a support boat will be responsible for the control of the boat at all times and will be held responsible for any inappropriate behaviour, dangerous actions or improper practices, or actions affecting the fairness or safety of competition.

Support boats shall not leave any device, piece of equipment, buoy, marker or similar item permanently in the water. Temporary use of floating objects is allowed for current measurement. These objects shall be removed as soon as the measurement has been taken.

Support boats shall take particular care to minimise their wash when transiting the course areas. Support boats shall not interfere with boats racing or official boats, or create a wake that affects boats racing.

### **Race Area Restrictions**

Support boats shall not be positioned:

- Closer than 100 m of any boat racing
- Within 100 m of the starting line and marks from the time of the preparatory signal until all boats have left the starting area, or the race committee signals a postponement, general recall or abandonment.
- Between any boat racing and the next mark of the course.
- Within 100 m of any mark of the course while boats are in the vicinity of that mark.
- Within 100 m of the finishing line and marks while boats are finishing.

In addition, support boats that are motoring above 5 knots shall remain at least 150m from any boat racing.